



SPECIFICATIONS

Cylinder

Extruded aluminum 6063-T5, .110" thick, seamless design. See finish note.

Trim Frame

Die cast aluminum, locks up to cylinder with (4) flat head machine screws. Finished to match cylinder. See finish note.

Reflector

(3) Aluminum coated polycarbonate reflector (120° Celcius / 248 ° Fahrenheit) with protective lacquer (110 ° Celcius / 230 degrees of Fahrenheit). Choice of 10° (spot), 20° (medium) or 40° (wide) distribution pattern.

Lens

Tempered prismatic glass lens mechanically held into place with three stainless steel clips. Silicone caulked to frame.

LED

(3) LUMILEDS LUXEON CoB 1211 chips, available in 3500k, 4000k and 5000k, 80 CRI, 37W. RoHS-compliant, UL-recognized component. See table.

Dimmable LED Driver*

(3) constant current drivers, Class 2, Outdoor Type 1, Input power 55 watts @ 120v, 54 watts @ 277v, output current 1050 mA. No PCBs, IP66, Input/Output Isolation, FCC Title 47 CFR Part 15, -40°C Min. Temperature, 90°C Max. T case Temperature, Surge Protection (2

KV), Open/Short Circuit Protection. Class A sound rating. Dimming control 0-10v, dimming range 10 to 100%.

EZ5® Surface Mount

Cast Aluminum 5/32" thick EZ5® splice box mounts to standard 4" octagonal junction box. Safety clip supports cylinder for hands free splice connection. Three #10-32 screws set 120° apart for twist and lock-up of cylinder to splice box. Supplied with quick-connect wiring harness. EZ5® design allows the contractor to install the fixture in 5 minutes or less. Finished same as housing. See finish note.

Canopy Set**

(Pendant Mount) 8" steel canopy 0-45° hang straight for 3/4" I.P.. 12" long stem (standard) finished to match housing.

EZ5® Wall Bracket Assembly

(Wall Mount) One-piece cast aluminum bracket / arm assembly with access plate for wire inspection. Cast aluminum, wall mounting plate with 1/4" thick neoprene gasket. Quick disconnect wiring harness. Escos EZ5® Mounting System allows the contractor to install the fixture in 5 minutes or less. Finished same as housing. See finish note.

Finish

Detergent cleaned with iron phosphate and chromic acid rust inhibi-

tor. Chip resistant powder urethane polyester coating, electrostatic applied and baked. Standard colors are textured black, textured bronze and white. Custom colors are available. Consult factory or sales representative.

Photometric Information

Contact factory.

Fixture Warranty

The mechanics are guaranteed to be free from defective material and workmanship, under normal installation and operating conditions, for ten years from date of shipment from the factory. See general terms and conditions.

Energy Data

32.7°C (90.8°F) Max. application temperature.

Certification and Labels

Surface and wall mount suitable for wet location, pendant mount suitable for damp location. ETL, CETL and I.B.E.W. assembled and labeled.

***NOTE: Not all dimming systems are compatible for all drivers. Extra wiring for dimming is an adder. If the fixture is to be dimmed, CONTACT FACTORY.**

**Canopy set for indoor applications only; contact factory for other applications and designs.

SPECIFICATIONS SUBJECT TO CHANGE WITHOUT NOTICE



SXCLR43 Surface Mount



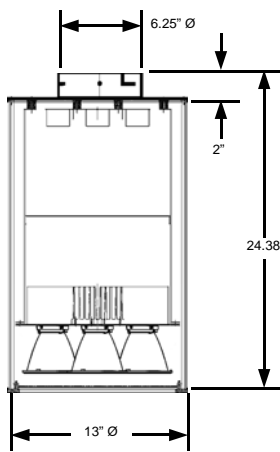
SXCLR43 Pendant Mount



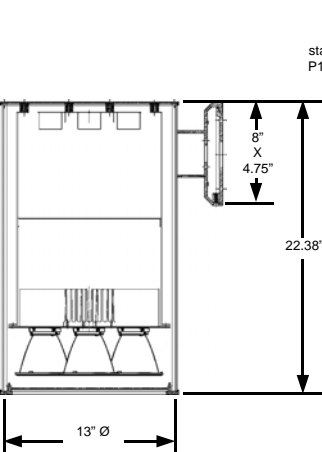
WXCLR43 Wall Mount

DIMENSIONS

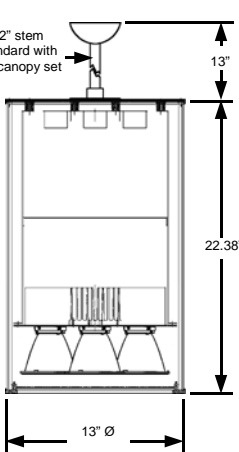
EZ5® Surface Mount Side View



EZ5® Wall Mount Side View



EZ5® Pendant Mount Side View



WBE City of Chicago Certified

3254 North Kilbourn Avenue Chicago, Illinois 60641-4505
 Phone: 773-427-7000 Fax: 773-427-7007 www.escolighting.com
 Established 1975



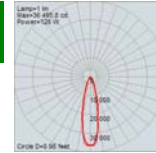


HOW TO ORDER

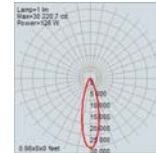
SXCLR432 Prismatic Lens



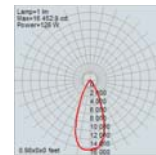
Catalog Number	Aperture	Total System Watts	Beam Angle	Color Temp	CRI	Lumens
SXCLR4313	Tempered Prismatic Glass Lens	134W	Spot 10°	3500K	80	8885
SXCLR4314	Tempered Prismatic Glass Lens	134W	Spot 10°	4000K	80	9865
SXCLR4315	Tempered Prismatic Glass Lens	134W	Spot 10°	5000K	80	10548
SXCLR4323	Tempered Prismatic Glass Lens	134W	Medium 20°	3500K	80	10314
SXCLR4324	Tempered Prismatic Glass Lens	134W	Medium 20°	4000K	80	9964
SXCLR4325	Tempered Prismatic Glass Lens	134W	Medium 20°	5000K	80	10654
SXCLR4343	Tempered Prismatic Glass Lens	134W	Wide 40°	3500K	80	9022
SXCLR4344	Tempered Prismatic Glass Lens	134W	Wide 40°	4000K	80	10014
SXCLR4345	Tempered Prismatic Glass Lens	134W	Wide 40°	5000K	80	10777



10° Spot with Prismatic Glass Lens



20° Medium beam spread with Prismatic Glass Lens



40° Wide beam spread with Prismatic Glass Lens

ACCESSORIES AND OPTIONS



Pendant Mount Suffix Catalog Number With
P1=12" long stem (standard)
P1X="X" is custom stem length
Example: SXCLR4325 becomes : **SXCLR4325P124**
 for a 24" long stem



EZ5® Change **S** prefix in catalog number to **W**
Wall Mount **Example:** SXCLR4325 becomes : **WXCLR4325**



Fuse and Fuse Holder Suffix Catalog Number With **F**
Example: SXCLR4325BL becomes : **SXCLR4325BLE**
 120 or 277 volt must be specified when ordering a Fuse and Fuse Holder.
 Suffix Catalog Number With
 120v = -1
 208v = -2
 240v = -3
 277v = -4
Example: SXCLR4325BLF becomes : **SXCLR4325BLF-1**

Finish Color Suffix Catalog Number With
 Textured Black=**BL**
 Textured Bronze=**BZ**
 White=**W**
Example: SXCLR4325 becomes : **SXCLR4325BL**

Contact factory for information concerning Photo Control or Occupancy Sensor.

EXAMPLE ORDER NUMBER: WXCLR4325FBL-1 = Wall mount, tempered prismatic glass lens, 111 watt, 5000k, fuse and fuse holder, textured black, 120 volt.

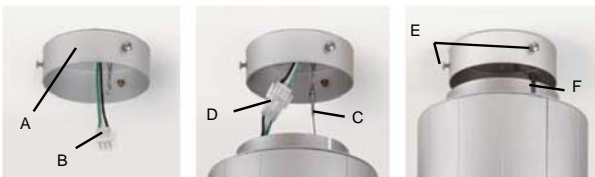
EZ5® INSTALLATION INSTRUCTIONS

EZ5® Wall Mount



1. Attach cast aluminum mounting plate on recessed j-box. 2. Connect quick connector to power supply. 3. Connect quick connector from power source to fixture. 4. Hang wall pack on mounting plate. 5. Secure wall pack to mounting plate with locking screw.

EZ5® Surface Mount



Attach the cast aluminum splice box (A) to the junction box. Pull wiring through the center hole in the cast aluminum splice box. Attach one end of the Easy Connect Wiring Harness (B) to the wires from the junction box. Attach the safety harness (C) from the fixture to the cast aluminum splice box. Connect the Easy Connect wire connections (D). Tuck the wiring up into the cast aluminum splice box (A). Align the three mounting screw heads (E) of the cast aluminum splice box with the slots on the fixture sleeve (F). Push up and rotate the fixture to lock the fixture into the slots. Tighten the three mounting screws (E).