

SPECIFICATIONS

Cylinder .080" Aluminum, rolled and seam welded. See finish note.

Cylinder Aperture Top Cast aluminum with 3/16" thick clear tempered glass mechanically held into place with three stainless steel clips. Silicone caulked to frame to prevent leakage and contaminants.

Downlight Aperture Open aperture standard. See lens options and accessories.

Reflectors Spun aluminum #3002, polished to a mirror finish then electro-chemically processed to provide specular finish. Extruded aluminum reflector tops, supports socket and reflector. Dissipates heat from lamp and socket.

Ballast Compact fluorescent electronic high power factor class P, universal voltage 120 thru 277 volt; 50/60 Hz.

Lamp Compact fluorescent by others, see chart.

Lamp Holder Vertically mounted white thermoplastic with snap-in lamp retainer.

Wall Bracket: One-piece cast aluminum construction arm / bracket assembly with access plate for wire inspection, Esco's "EZ5" mounting system. Cast aluminum wall mounting plate with 1/4" thick neoprene gasket. Quick connect wiring harness. Finished to match housing.

Finish Detergent cleaned with iron phosphate and chromic acid rust inhibitor. Chip resistant powder urethane polyester coating, electro-static applied and baked.

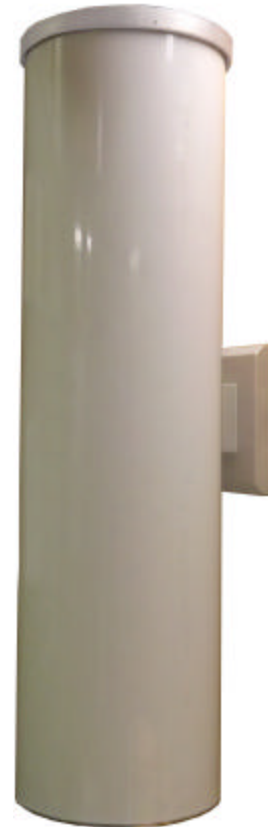
Standard colors black, white and bronze. Custom colors are available. Consult factory or sales representative.

Labels Wall mount suitable for wet location. ETL, CETL and I.B.E.W. labeled.

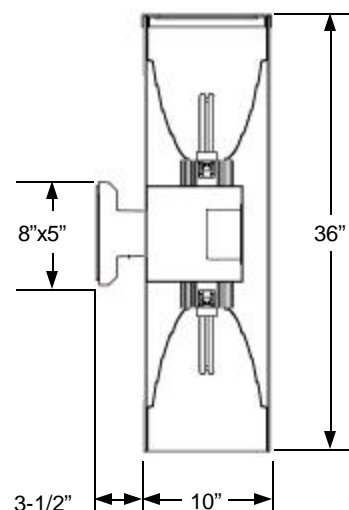
Fixture Warranty The fixture mechanics are guaranteed to be free from defective material and workmanship, under normal Installation and operating conditions, for ten years from date of shipment from the factory. See General Terms and Conditions. 55°C (131°F) maximum ambient temperature.

Photometric Information: Contact factory.

SPECIFICATIONS SUBJECT TO CHANGE WITHOUT NOTICE



DIMENSIONS



WBE City of Chicago Certified

3254 North Kilbourn Avenue Chicago, Illinois 60641-4505
 Phone: 773-427-7000 Fax: 800-217-1260 www.escolighting.com
Established 1975



HOW TO ORDER

Architectural open
downlight.



Catalog Number	Watts	Lamp Base
WB2609T3	26W	GX24q-3
WB2609T4	32W	GX24q-3
WB2609T5	42W	GX24q-4
WB2609T6	57W	GX24q-5

C#73 Tempered prismatic glass
lens.



Catalog Number	Watts	Lamp Base
WB2629T3	26W	GX24q-3
WB2629T4	32W	GX24q-3
WB2629T5	42W	GX24q-4

C#73 Prismatic tempered glass
lens and splayed stepped baffle.



Catalog Number	Watts	Lamp Base
WB2659T3	26W	GX24q-3
WB2659T4	32W	GX24q-3
WB2659T5	42W	GX24q-4

C#73 Prismatic tempered glass
lens and splayed baffle.



Catalog Number	Watts	Lamp Base
WB2689T3	26W	GX24q-3
WB2689T4	32W	GX24q-3
WB2689T5	42W	GX24q-4

Architectural open downlight
with baffle.



Catalog Number	Watts	Lamp Base
WB2619T3	26W	GX24q-3
W2619T4	32W	GX24q-3
W2619T5	42W	GX24q-4
W2619T6	57W	GX24q-5

Flat fresnel glass lens.



Catalog Number	Watts	Lamp Base
WB2639T3	26W	GX24q-3
WB2639T4	32W	GX24q-3
WB2639T5	42W	GX24q-4

Fresnel glass lens and splayed
stepped baffle.



Catalog Number	Watts	Lamp Base
WB2669T3	26W	GX24q-3
WB2669T4	32W	GX24q-3
WB2669T5	42W	GX24q-4

Fresnel glass lens and splayed
baffle.



Catalog Number	Watts	Lamp Base
WB2699T3	26W	GX24q-3
WB2699T4	32W	GX24q-3
WB2699T5	42W	GX24q-4

Color Suffix

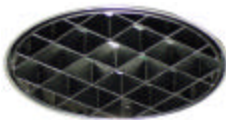
W= White	1=120V	5=480V
BZ= Bronze	2=208V	8=Multi-tap wired for 277V
BL= Black	3=240V	9=Multi-tap unwired.
	4=277V	0=347V

Voltage Suffix

EXAMPLE: Wb2689T3PC4BZ-1 = 26 watt C#73, prismatic tempered glass lens and splayed baffle, photo control, bronze, 120V.

ACCESSORIES

Louver Guard
Suffix catalog number
with LG3.



Fuse and Fuse Holder
Suffix Catalog Number With F



Photo Control
Suffix Catalog # With

PC4 =120 Volt
PC5 =277 Volt



WBE City of Chicago Certified

3254 North Kilbourn Avenue Chicago, Illinois 60641-4505
 Phone: 773-427-7000 Fax: 800-217-1260 www.escolighting.com
 Established 1975

