

SPECIFICATIONS

Housing: Die cast aluminum with internal rib design to prevent wall distortion or stress sagging; built-in hinge. Finished architectural bronze. See finish note.

Door Assembly: Die cast aluminum, clear tempered lens, silicone caulked to frame plus eight hold down clips, integral silicone door frame gasket to complete lifetime seal. Finished architectural bronze. See finish note.

Reflector: Computer generated one-piece semi-specular aluminum for maximum efficiency.

Ballast: H.P.F. core and coil with capacitor and supporting electrical components designed for maximum heat dissipation. Located in separate compartment with easy access.

Lamp: Clear, (by others). See table.

Lamp Holder: High heat porcelain socket, 4 KV rated with nickel plated copper screw shell, spring loaded center contact, lamp grips, SF-2 leads (200° C). Impregnated gasket.

Arm Mount: 6" or 12" long extruded aluminum arm with gasketing for pole and fixture. See finish note.

Yoke Mounting: Steel adjustable yoke. See finish note.

Adjustable Slip Fitter: Cast aluminum. Fits over 2" pole or tenon with locking rotor plate from 90° to 180°. Enclosed and gasketed internal chamber. See finish note.

Wall Mount Bracket: One-piece cast aluminum bracket/arm assembly with access plate for wire inspection. Cast aluminum, wall mounting plate with 1/4" thick neoprene gasket. Quick disconnect wiring harness. **EZ5 Mounting System** allows the contractor to install the fixture in 5 minutes or less. Finished same as housing.

Finish: Architectural bronze (AB), detergent cleaned with iron phosphate and chromic acid rust inhibitor, chip resistant powder urethane polyester coating, electrostatic applied and baked.

Fixture Warranty: The fixture mechanics are guaranteed to be free from defective material and workmanship, under normal installation and operating conditions, for five years from date of shipment from the factory. See General Terms and Conditions.

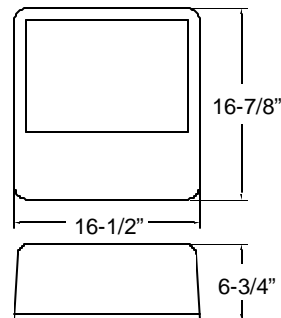
Labels: I.B.E.W., ETL, CETL listed. Suitable for wet location.

Photometric Information: Contact factory or visit www.escolighting.com.

SPECIFICATIONS SUBJECT TO CHANGE WITHOUT NOTICE

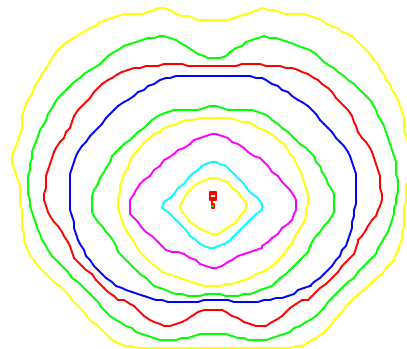


Dimensions



EPA=1.95 Sq.Ft.
Weight=32LBS.

Photometrics



Efficient type III distribution computer designed reflector system.



3254 North Kilbourn Avenue Chicago, Illinois 60641-4505
Phone: 773-427-7000 Fax: 800-217-1260 www.escolighting.com

A Woman-Owned Business

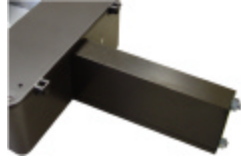
Established 1975



4 MOUNTING OPTIONS



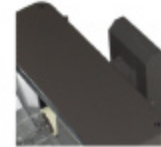
Adjustable yoke mount.
Suffix catalog number
with **YAB**.



Extruded aluminum arm.
Suffix catalog number
with **AAB 6"** or **AAB 12"**.



Adjustable slip fitter.
Suffix catalog number
with **SAB**.



Cast aluminum **EZ5** wall
mount. Suffix catalog
number

HOW TO ORDER

Catalog Number	Watts	Light Source	Catalog Number	Watts	Light Source	Voltage Suffix
FL1630	18W	LPS	FL1626	175W	MH	1=120V
FL1631	35W	LPS	FL1617	175W	MH/PS	2=208V
FL1614	100W	HPS	FL1627	250W	MH	3=240V
FL1615	150W	HPS	FL16225	250W	MH/PS	4=277V
FL1617	250W	HPS	FL16232	320W	MH/PS	5=480V
FL1618	400W	HPS	FL16235	350W	MH/PS	6=230V
FL1624	100W	MH	FL1628	400W	MH	7=220V
FL1625	150W	MH	FL16240	400W	MH/PS	8=Multi-tap wired for 277V 9=Multi-tap unwired. 0=347V

EXAMPLE: FL1626AAB6-4 =175W Metal Halide, 6" Mounting Arm, Architectural Bronze, 277V.

ACCESSORIES



Fuse and Fuse Holder

Add suffix "F1" for single fusing.
(120V-277V).
Add suffix "F2" for double fusing.
(480V).



Photo Control

Add suffix "PC"
to order number.



3254 North Kilbourn Avenue Chicago, Illinois 60641-4505
Phone: 773-427-7000 Fax: 800-217-1260 www.escolighting.com

A Woman-Owned Business
Established 1975

