



SPECIFICATIONS

Housing: Die cast aluminum with internal rib design to prevent wall distortion or stress sagging; built-in hinge. Finished architectural bronze. See finish note.

Door Assembly: Die cast aluminum, clear tempered lens, silicone caulked to frame plus eight hold down clips, integral silicone door frame gasket to complete lifetime seal. Finished architectural bronze. See finish note.

Reflector: Computer generated one-piece semi-specular aluminum for maximum efficiency.

Ballast: Fulham induction electronic ballast 50/60Hz multi-tap 120-277V.

Lamp: Fulham High Horse induction electrodeless fluorescent lamp with average rated life of 100,000 hours. Standard color temperature is 5000K. Other color temperatures available. Contact factory.

Arm Mount: 6" or 12" bng extruded aluminum arm with gasketing for pole and fixture. See finish note.

Yoke Mounting: Steel adjustable yoke. Finished same as housing.

Adjustable Slip Fitter: Cast aluminum. Fits over 2-3/8" pole or tenon with locking rotor plate from 90° to 180°. Enclosed and gasketed internal chamber. Finished same as housing.

Finish: Detergent cleaned with iron phosphate and chromic acid rust inhibitor, chip resistant powder urethane polyester coating, electrostatic applied and baked. Standard color architectural bronze (AB).

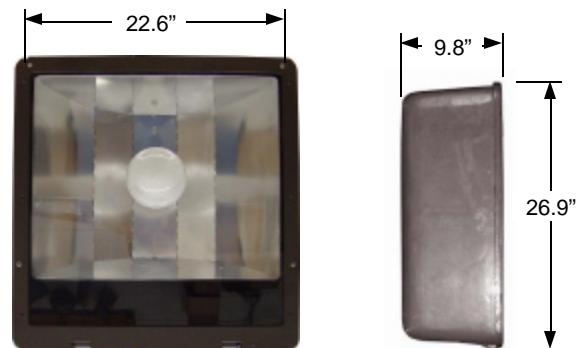
Labels: I.B.E.W. labeled, ETL / CETL listed. Suitable for wet location.

Fixture Warranty: The fixture mechanics are guaranteed to be free from defective material and workmanship, under normal installation and operating conditions, for five years from date of shipment from the factory. See General Terms and Conditions.

Photometric Information: Contact factory.



DIMENSIONS



Fulham High Horse



SPECIFICATIONS SUBJECT TO CHANGE WITHOUT NOTICE



3254 North Kilbourn Avenue Chicago, Illinois 60641-4505
 Phone: 773-427-7000 Fax: 800-217-1260 www.escolighting.com

A Woman-Owned Business
 Established 1975

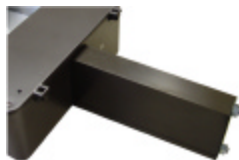




4 MOUNTING OPTIONS



Adjustable yoke mount.
 Suffix catalog number
 with **YAB**.



Extruded aluminum arm.
 Suffix catalog number
 with **AAB 6"** or **AAB 12"**.



Adjustable slip fitter.
 Suffix catalog number
 with **SAB**.

HOW TO ORDER

Catalog Number	Lamps	Initial Lumens	Color Temp	CRI
FLF1655022	165W	11,550	5000	80

Suffix catalog number with "- 8" for multi-tap 120-277 volt ballast.

EXAMPLE ORDER NUMBER: FL165022SAB-8= Fulham High Horse induction 165 watt lamp, 5000k, with adjustable slip fitter finished textured bronze, Multi-tap ballast 120-277 volt.

ACCESSORIES



Fuse and Fuse Holder
 Add suffix "F"
 to order number.



Photo Control
 Add suffix "PC"
 to order number.



3254 North Kilbourn Avenue Chicago, Illinois 60641-4505
 Phone: 773-427-7000 Fax: 800-217-1260 www.escolighting.com

A Woman-Owned Business
 Established 1975

