



## SPECIFICATIONS

**Housing:** Die cast aluminum with internal rib design to prevent wall distortion or stress sagging; built-in hinge. Finished architectural bronze. See finish note.

**Door Assembly:** Die cast aluminum, clear tempered lens, silicone caulked to frame plus eight hold down clips, integral silicone door frame gasket to complete lifetime seal. Finished architectural bronze. See finish note.

**Reflector:** Computer generated one-piece semi-specular aluminum for maximum efficiency.

**Ballast:** Philips QL induction high frequency electronic ballast 165W 120 or 200V—277V. Contact factory for other voltages.

**Lamp:** Philips QL induction electrodeless fluorescent lamp with average rated life of 100,000 hours.

**Arm Mount:** 6" or 12" long extruded aluminum arm with gasketing for pole and fixture. Finished same as housing.

**Yoke Mounting:** Steel adjustable yoke. Finished same as housing.

**Adjustable Slip Fitter:** Cast aluminum. Fits over 2-3/8" pole or tenon with locking rotor plate from 90° to 180°. Enclosed and gasketed internal chamber. Finished same as housing.

**Finish:** Detergent cleaned with iron phosphate and chromic acid rust inhibitor, chip resistant powder urethane polyester coating, electrostatic applied and baked. Standard color architectural bronze (AB).

**Labels:** I.B.E.W. labeled, ETL / CETL listed. Suitable for wet location.

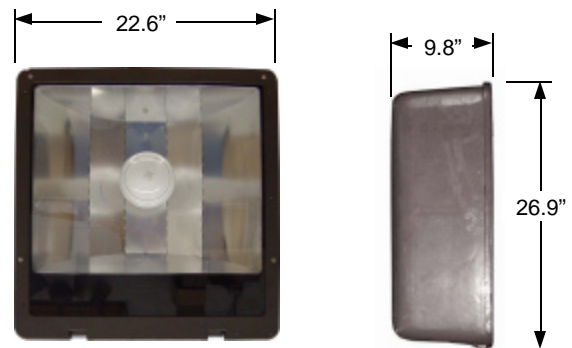
**Fixture Warranty:** The fixture mechanics are guaranteed to be free from defective material and workmanship, under normal installation and operating conditions, for five years from date of shipment from the factory. See General Terms and Conditions.

**Photometric Information:** Contact factory.

*SPECIFICATIONS SUBJECT TO CHANGE WITHOUT NOTICE*



## DIMENSIONS



3254 North Kilbourn Avenue Chicago, Illinois 60641-4505  
 Phone: 773-427-7000 Fax: 800-217-1260 [www.escolighting.com](http://www.escolighting.com)

**A Woman-Owned Business**  
 Established 1975

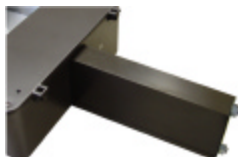




## 4 MOUNTING OPTIONS



Adjustable yoke mount.  
 Suffix catalog number  
 with **YAB**.



Extruded aluminum arm.  
 Suffix catalog number  
 with **AAB 6"** or **AAB 12"**.



Adjustable slip fitter.  
 Suffix catalog number  
 with **SAB**.

## HOW TO ORDER

Catalog Number	Lamps	Initial Lumens	Color Temp	CRI	Voltage Suffix
FLQ93022	165W	12,000	3000	80	<b>1=120V</b>
FLQ94022	165W	12,000	4000	80	<b>2=208V</b>
FLQ95022	165W	12,000	5000	80	<b>3=240V</b> <b>4=277V</b>

**EXAMPLE ORDER NUMBER: FLQ93022SAB4=** QL induction 165 watt lamp, 3000k, with adjustable slip fitter finished textured bronze, 277 volt.

## ACCESSORIES



**Fuse and Fuse Holder**  
 Add suffix "F"  
 to order number.



**Photo Control**  
 Add suffix "PC"  
 to order number.



3254 North Kilbourn Avenue Chicago, Illinois 60641-4505  
 Phone: 773-427-7000 Fax: 800-217-1260 [www.escolighting.com](http://www.escolighting.com)

**A Woman-Owned Business**  
 Established 1975

